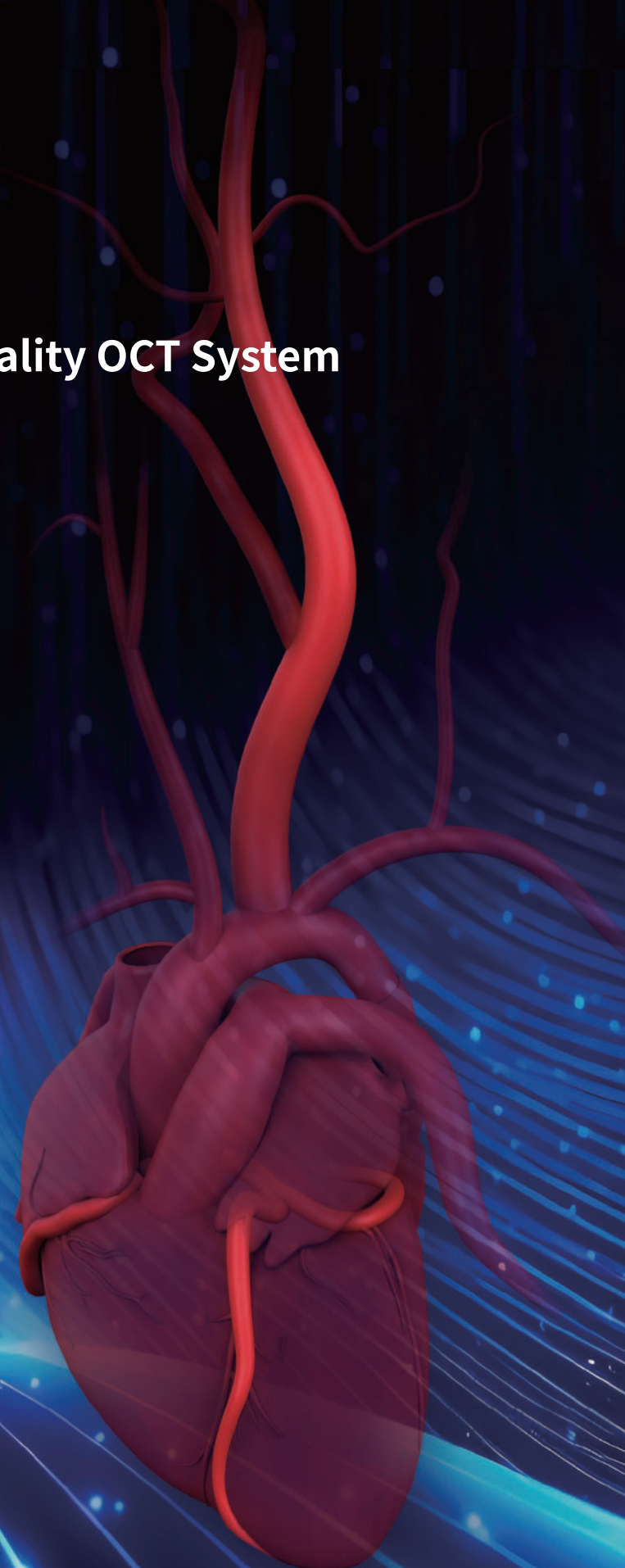
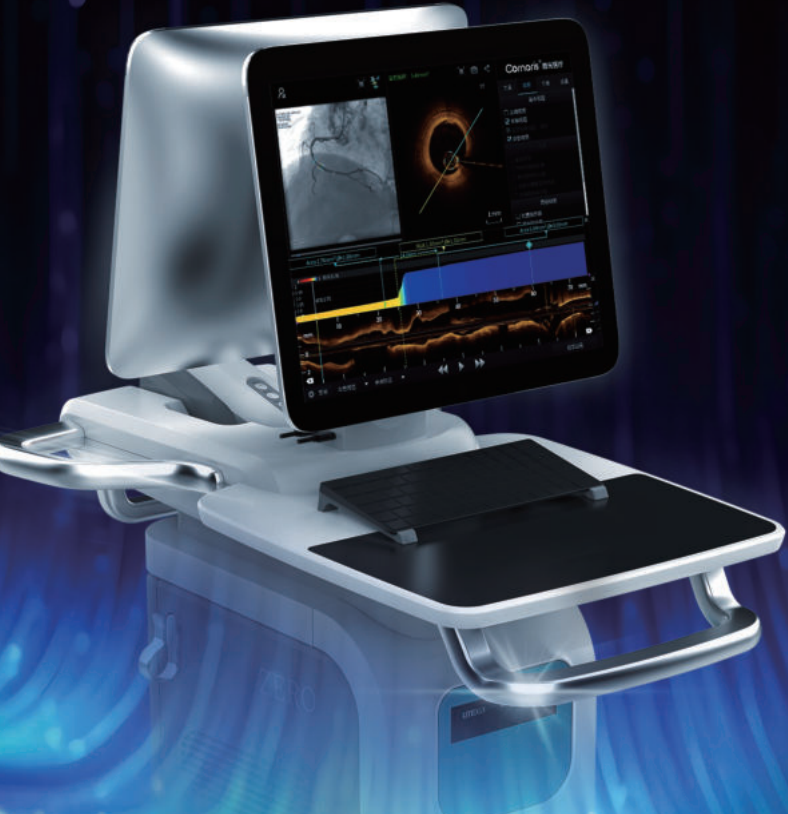


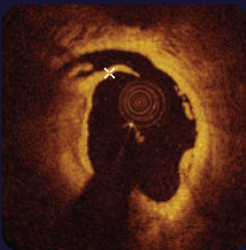


Panvasis™ ZERO

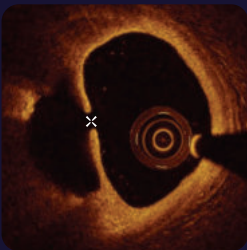
First Panvascular Multimodality OCT System



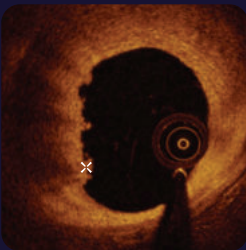
OCT Images for Coronary Artery



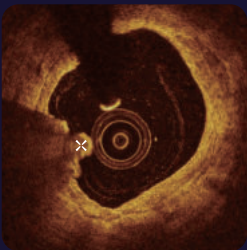
Dissection



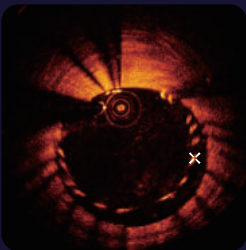
Plaque Rupture



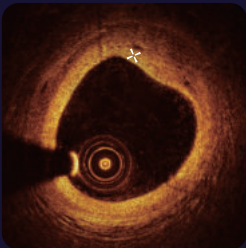
Plaque Erosion



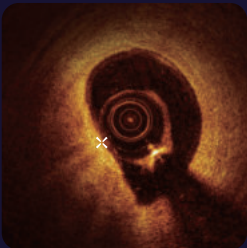
Calcified Nodules



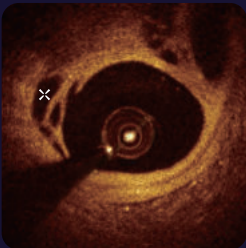
Stent Malapposition



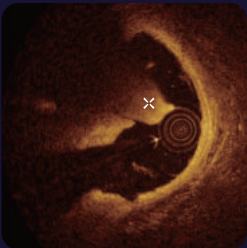
Micro Channels



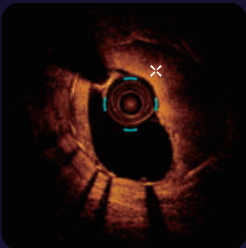
Macrophage Infiltration



Woven Blood Vessel

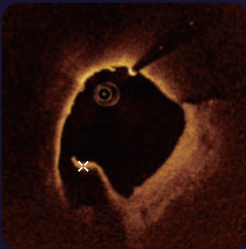


Red Thrombosis



In-stent Restenosis

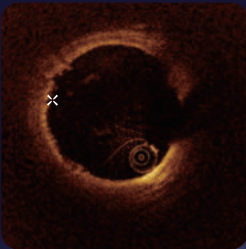
OCT Images for Carotid Artery



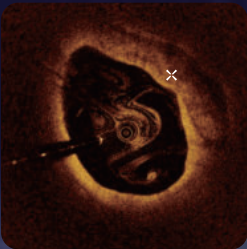
Dissection



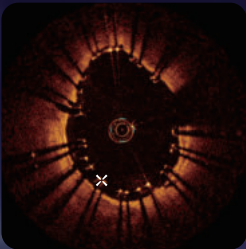
Plaque Rupture



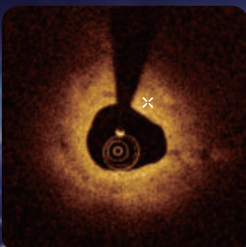
Plaque Erosion



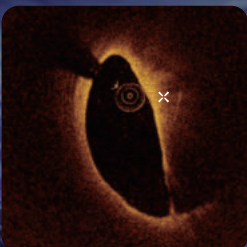
Calcified Nodules



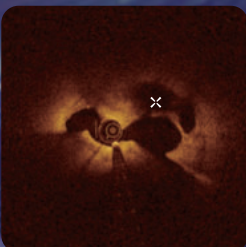
Stent Malapposition



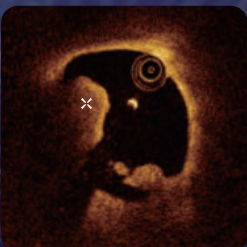
Fibrous Plaque



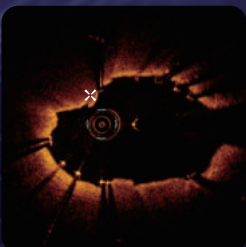
Lipid Plaque



Woven Blood Vessel



Mixed Thrombosis



Plaque Prolapse

Panvasis™ ZERO

Indication	Coronary & Carotid Arteries
Resolution (μm)	≤15
Frame rate (f/s)	200
Pullback length (mm)	40/55/80
Pullback speed (mm/s)	20/40
Max imaging range in contrast (mm)	22



Shenzhen Vivolight Medical Device & Technology Co.,Ltd.

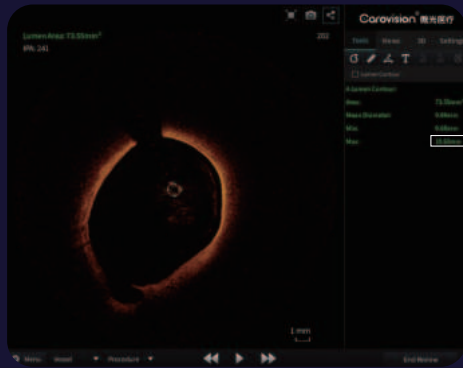
Address: 6th Floor, Hi-Tech Building, Block 67, Xingdong
Community, Xin'an Street, Bao'an District, Shenzhen China
Telephone: (0755) 8696 1139
Hotline: 400 6658 779
Website: www.vivolight.com

Product: Intravascular Imaging System
Model: ZERO
Manufacture: Shenzhen Vivolight Medical Device & Technology Co., Ltd.

First Panvascular Multimodality OCT System



Panvascular OCT System
Indicated for coronary and neuro-interventions



Maximum Imaging Range 22mm
Vessels with a diameter less than 11mm can be imaged

Three Major Scanning Modes



Full View Mode
Complete an ultra-long pullback of 80mm in 2 seconds

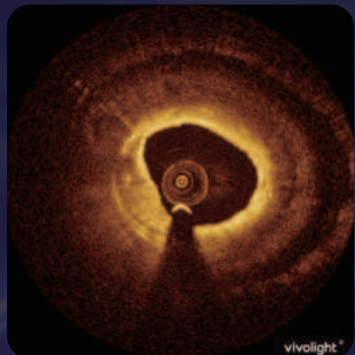


High Definition Mode
Complete an ultra HD scan of 55mm in 2.75 seconds

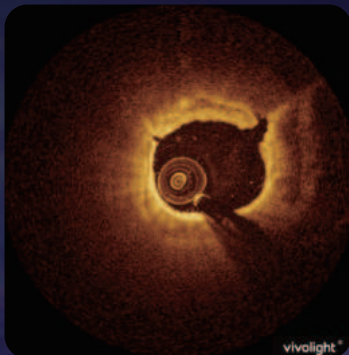


Super Fast Mode
Complete a super fast pullback length of 40mm in 1 second

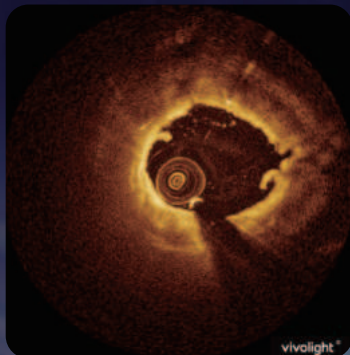
Compatible with Various Flushing Medias



Contrast

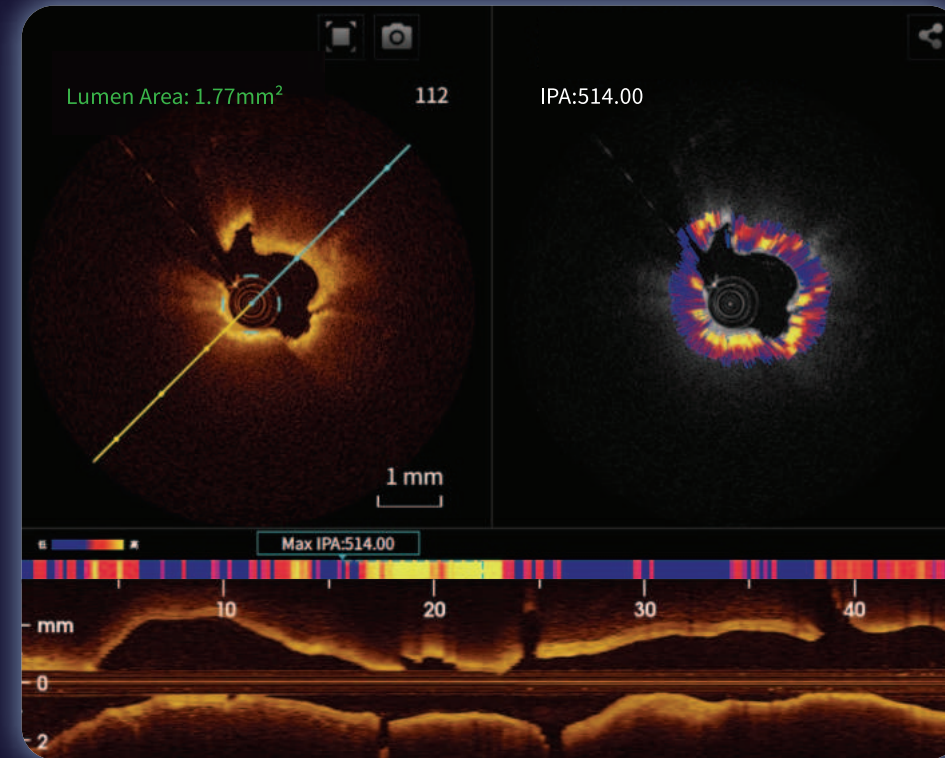


Low-molecular Weight Dextran



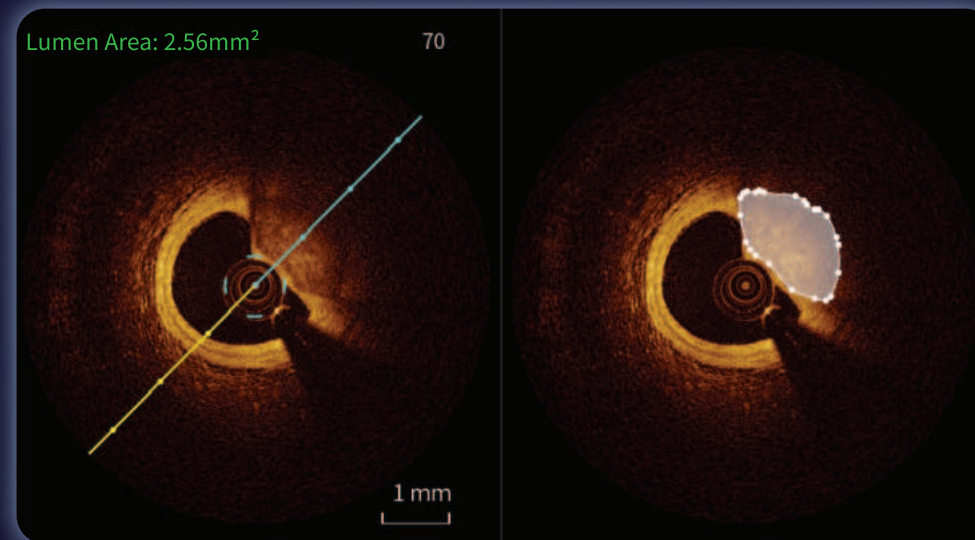
Normal Saline

Innovative Technology



Index of Plaque Attenuation, IPA

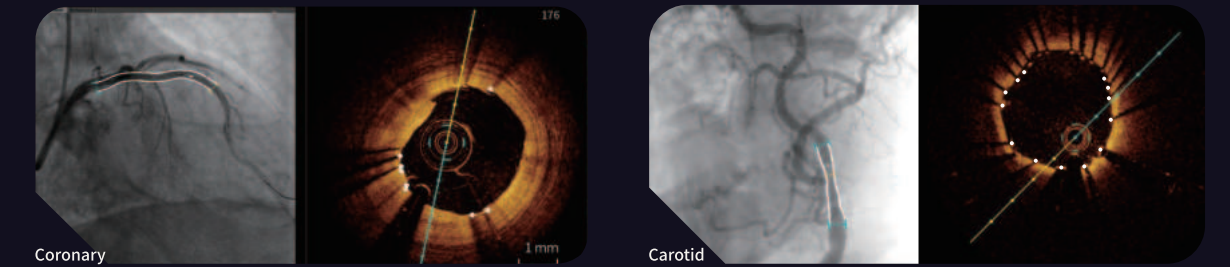
Auto assessment of plaque stability for PCI/CAS strategy selection, available after a single pullback without extra cost & time



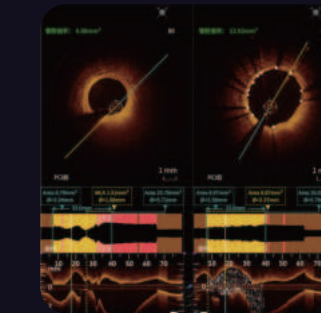
Intelligent Calcium Assessment, ICA

Automated assessment of calcified lesion severity by an AI algorithm simplifies the treatment of calcified lesions

First-in-class OCT Solutions



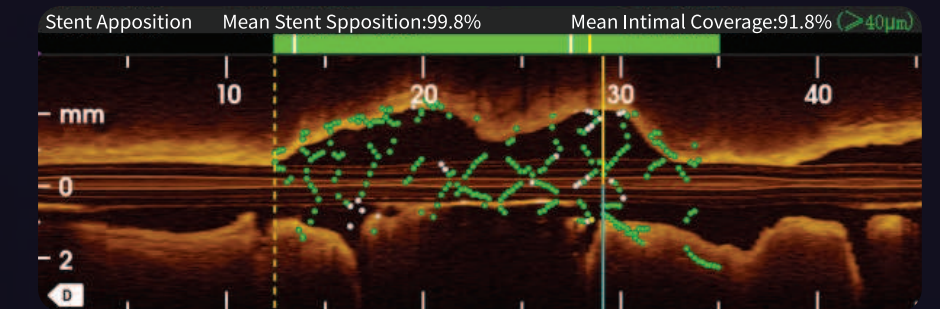
ACR
(OCT Angiographic Co-registration)



Pre & Post PCI/CAS Images Fusion for Comparison



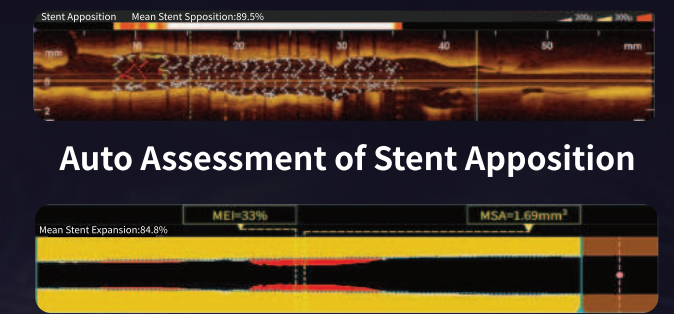
3D View



Auto-calculation of Stent Neointimal Coverage Rate



Auto Assessment for Bifurcation Lesions



Auto Assessment of Stent Apposition

Stent Expansion Index with Innovative Algorithm